

SignalTight™ Mini

The continuity solution



Protection against loose connectors

Digital services are seriously impacted by loose connectors:

- Pixilation and tiling of video
- Reduced data speeds
- Poor VoIP voice quality

SignalTight™ Mini Drop Connector - Maximize performance for your headend

Achieves signal transmission approaching that of a fully-tightened connector, even if left loose

- Unique 7/16" nut profile
- Maintains ground continuity even when very loose
- Reduces QAM errors/packet loss
- Prevents service issues from loose connections
- Ideal for customer self-install kits



SignalTight™ Technology
Continuity member maintains electrical continuity between nut and post

EX series universal compression.
Installs easily on standard shield through quad shield cable

.031" diameter step up pin ensures proper contact with mating ports

Innovative pin and guide stored in the nut provides easy access to insert the small mini center conductor.

The pin insulator provides a guide for easy insertion into the post.

Product Specifications

Bandwidth	0 MHz to 3 GHz
Impedance	75 Ohms (nominal)
Return Loss	Minimum -30 dB to 3 GHz
Insertion Loss	Less than .10 dB to 3 GHz
Operating Voltage	90 V (at 60 Hz continuous AC)
Operating Temperature	-40° F to + 140° F (-40° C to 60° C)

EXM-XLPLUS



VT200



LDTMINI



TW307 AH



Part Number

EXM-XLPLUS	SignalTight, Mini Series, F-Connector
------------	---------------------------------------

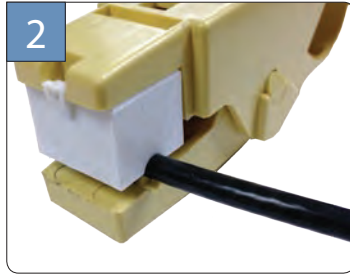
Preparation & Installation Tools

Compression Tool	VT200 , CATAS (for use w/ XL series)		
1/4" – 1/4" mini drop cable preparation too	LDTMINI		
7/16" snap torque wrench	TW207	TW307	TW307 AH

Installation Instructions – EXM-XLPLUS®



Cut cable squarely.



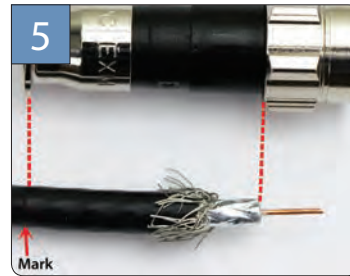
Using a fixed blade, mini prep tool in good condition, prepare cable to 1/4" x 1/4" dimensions. Use edge of tool if no stop



Fold back braid. If Trishield or Quadshield remove additional foil layer and fold back remaining braid.



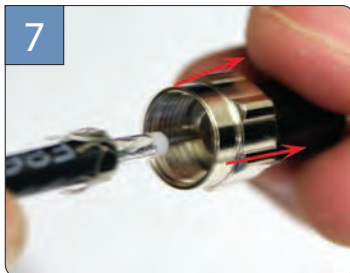
Ensure cable preparation is correct. Use gauge on VT tool to check the center conductor length.



Align the cable with the connector and mark the cable jacket for proper installation depth as shown above.



Insert cable center conductor into the pin stored within the nut of the connector. Push into the pin while rotating the connector.



Once the center conductor is pressed fully into the pin pull the connector away from the cable. The step up pin and insulator guide will stay with the cable as shown.



Insert the cable into the back of the connector with the step up pin and insulator guide inside the post. Push the connector on while rotating until fully seated.



The cable mark from step 5 should line up with the back edge of the compression ring.



Using your VT-200 compression tool, make sure the rotating compression head is positioned for 6/59 as shown in the picture. Properly seat connector and compress fully.



Tighten connector to recommended torque.

EXM-XLPLUS



Part Number	Description
EXM-XLPLUS	SignalTight, Mini Series, F-Connector

VT-200

